

# INDUSTRIAL FLUE GAS DAMPERS

100% designed and manufactured in Sweden



OUR EXPERIENCE  
YOUR APPLICATION  
CUSTOMIZED FOR YOU

**SWEDENBORG**





# SOLID DESIGN IN ANY SHAPE 100% CUSTOMIZABLE

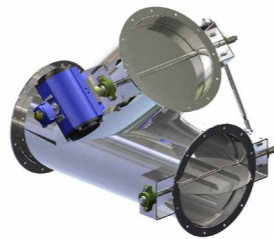
Swedenborg is an engineering company with over 20 years of experience designing and manufacturing dampers. All our dampers are tailor made to fit the specific operating conditions and functionality our clients need.

## RANGE OF APPLICATIONS

Temperature: -50° C to 1100° C  
Pressure: +/- 0,5 Bar (g)  
Media: for gases or bulk material

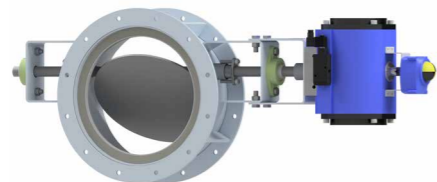
### 3-WAY DAMPERS

The 3-way damper is a 2-in-1 solution with both dampers and piping in one package.



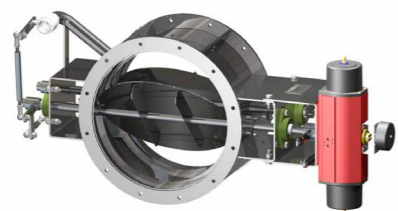
### DISC DAMPERS

Very high level of tightness without using air sealing thanks to its unique design.



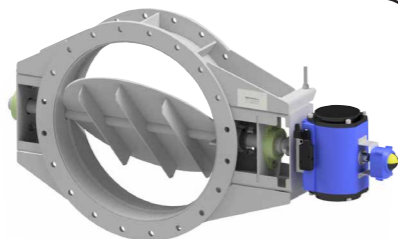
### AIR SEALING DAMPERS

100% gas tightness with air sealing barrier for safe maintenance work during operation.



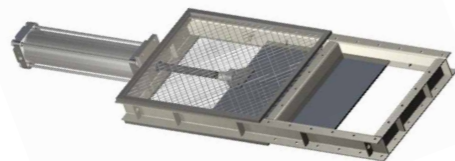
### MARINE DAMPERS

Strengthened design for demanding marine applications with turbulent flow and vibrations.



### GUILLOTINE DAMPERS

We manufacture guillotine and slide gate valves for gas and bulk material.



## CONNECTIONS



Flanges according to most standards, weld ends, wafer type or customer specific requests.

## MATERIAL



Our dampers can be manufactured in almost any material, from carbon steel to duplex steel, high-temperature steel and wear resistant material – all laser cut to precision.

## ACCESSORIES



Inductive or mechanical switches, positioners, mechanical locking systems etc.

## SURFACE TREATMENT



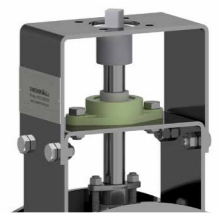
Shop primer, epoxy-based paint or painting according to a specific system or standard, lined with refractory or rubber for extreme environments.

## ACTUATORS



Manual levers and gearboxes, pneumatic, electric or hydraulic actuators.

## BEARINGS



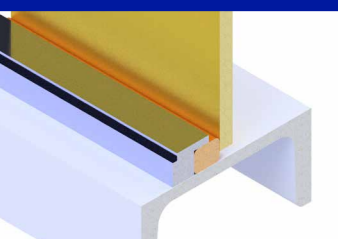
Heavy duty, maintenance free bearings mounted on brackets outside the gas stream

## STUFFING BOX

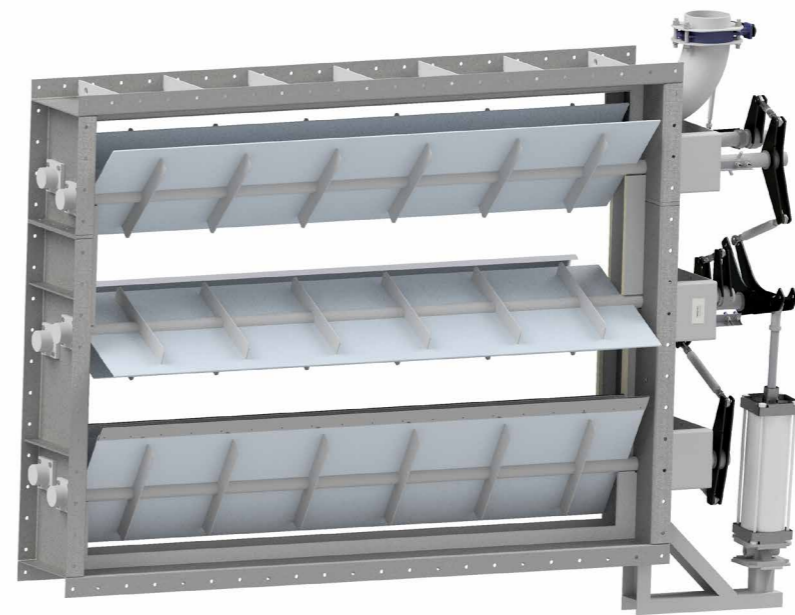


The stuffing box with a stainless-steel packing gland protects the surrounding atmosphere.

## SEALING OPTIONS



Steel on steel, glass fiber, viton or customer specific. Standard profile or as a raised seat for dusty environments.





Our headoffice in Gothenburg, Sweden



### OUR FACTORIES

Our factories are located in Gothenburg area.



**“We are looking for more distributors across Europe...”**

Retailer:

### CONTACT HEAD OFFICE

AB GF Swedenborg Ingeniörsfirma  
Metodvägen 2D  
S-435 33 Mölnlycke  
Sweden

Phone: +46 (0)31 336 87 80  
Fax: +46 (0)31 336 87 99  
Mail: [info@swedenborg.se](mailto:info@swedenborg.se)  
[www.swedspjall.com](http://www.swedspjall.com)

